

## Intergraph® G/Technology – Version 10.0.2



Intergraph®'s G/Technology is a feature-rich application platform designed to meet the geospatial resource management needs of utilities and communications companies. It is based on Intergraph's knowledge of utilities and communications company requirements collected during our nearly 40 years serving these industries. The hallmark of G/Technology is an open architecture combined with data management strategies, the spatial initiatives of database management systems, and compliance with industry standards.

G/Technology minor release 10.0.2 completes the upgrade path for current customers to take full advantage of the capabilities of the

G/Technology 10 major release platform. Spatial Data Upgrade Tools are now available for updating G/Technology 9.3.3 or 9.4 geometry data from Oracle Relational storage to the Oracle Locator storage format used by G/Technology 10. Minor release 10.0.2 also makes functionality enhancements introduced in recent 9.4 minor releases available on the G/Technology 10 platform.

G/Technology minor release 10.0.2 includes functionality introduced previously in minor releases 9.4.1 and 9.4.2. If you are upgrading from one of these versions, you may already be taking advantage of some benefits.

### FOCUS OF ENHANCEMENTS

G/Technology version 10.0.2 release contains a number of updates, delivering enhancements in the following areas:

- Designer users can be more efficient:
  - **Additional Feature Explorer** shortcut keys are available when the corresponding button is visible on the toolbar.
  - **Conflict Detection and Resolution** workflows are improved; designers can use interactive conflict and detection reports to study data discrepancies and make informed decisions about which edits to retain; administrators can pre-configure multiple report types for conflict resolution.
- Microsoft® Windows® Vista SP1 and Windows Server 2008 have been added to G/Technology's supported environments.
- Telecommunications facility management supports additional complexity and data integrity:
  - **Pair Count Validation** now checks each copper pair count string to ensure it was entered with an eight-character prefix.
  - The **Loop Makeup** command supports tracing through a feature more than once in uncommon scenarios where a cross-connect occurs on a branch in the loop.
  - The **Find by Phone Number** capability has been updated to handle an uncommon scenario when multiple rows of information are returned from the assignment system interface.
- Designer and Viewer users can share data in several industry-recognized formats using the new **Export to CAD** client command.
- MobileViewer subset publishing for field data has new capabilities:
  - MobileViewer subsets can be twice as large, as SQL Server Express 2005 replaces MSDE.
  - The administrator can publish selected regions or choose not to apply any regional criteria when generating a subset for use with MobileViewer.
- For system implementers, the customization API has been extended:
  - Programmers can easily retrieve a list of features within a given area.
  - More complex schematics bus layouts are possible.
  - Custom extensions can include diagnostics output integrated with product-generated data.
  - The Viewer application architecture has been updated to support Microsoft's Composite UI Application Block (CAB) and Smart Class Software Factory technologies.
- Administrators have more options for file locations; product commands and API calls can consistently find product-delivered files, search subfolders, expand environment variables, and use partial paths.
- **Spatial Data Upgrade Tools** provide an upgrade path for spatial data from G/Technology 9.3.3 and 9.4 systems to Oracle Locator storage:

- Separate, no-cost delivery for maintenance-paying customers
- Automated upgrade of facility data, including features with pending job edits
- Automated upgrade of catalog geometry data
- Capability to complete the majority of upgrade activities in parallel with production use
- Interactive error reports aid in geometry correction
- Procedural documentation for the data upgrade process from previous releases
- Technical Note mapping for G/Technology geometry types to Oracle Locator storage

## PREVIOUS ENHANCEMENTS

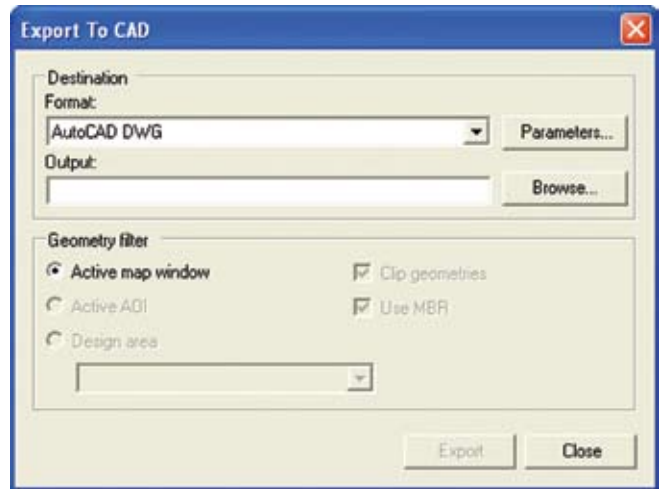
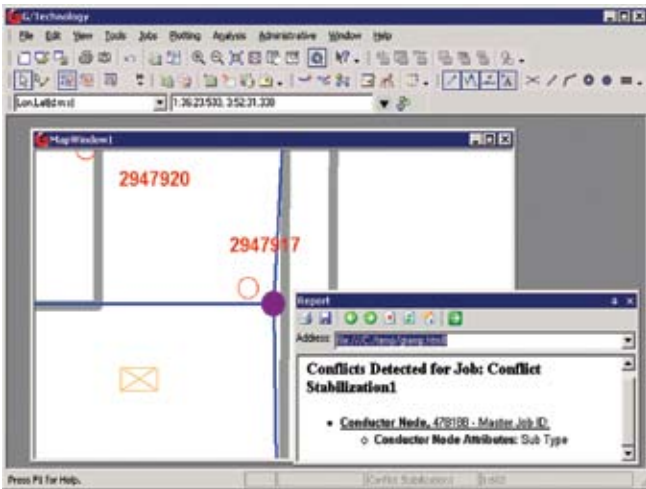
- Transition from Oracle's Relational Model (ORM) to the Oracle Object Model (OOM – Oracle Locator) offers greater interoperability with other legacy systems and further supports corporate and industry standards for data storage.

- Maintenance of Z value for geospatial coordinates enables additional analysis and improves decision support.
- GeoMedia® interoperability provides a ready set of available geospatial analytics and simpler secondary data access.

## COMPONENTS OF INTERGRAPH'S G/TECHNOLOGY

Intergraph's G/Technology 10.0.2 product suite includes:

- G/Technology Administrator
- G/Technology Analyst
- G/Technology Assignment
- G/Technology Designer
- G/Technology MobileViewer
- G/Technology NetExport Server
- G/Technology NetPlot Server
- G/Technology NetViewer
- G/Technology Network Analysis Interface
- G/Technology Work Management Interface



## ABOUT INTERGRAPH

Intergraph is the leading global provider of engineering and geospatial software that enables customers to visualize complex data. Businesses and governments in more than 60 countries rely on Intergraph's industry-specific software to organize vast amounts of data into understandable visual representations and actionable intelligence. Intergraph's software and services empower customers to build and operate more efficient plants and ships, create intelligent maps, and protect critical infrastructure and millions of people around the world.

Intergraph operates through two divisions: Process, Power & Marine (PP&M) and Security, Government & Infrastructure (SG&I). Intergraph

PP&M provides enterprise engineering software for the design, construction, and operation of plants, ships, and offshore facilities. Intergraph SG&I provides geospatially powered solutions to the defense and intelligence, public safety and security, government, transportation, photogrammetry, utilities, and communications industries.

For more information, visit [www.intergraph.com](http://www.intergraph.com).

